

UNFNSHD01

The Unfinished City: Mikrorayon

Our proposal at the scale of the Mikrorayon considers all four topics (Food, Energy, Waste, Matter) and forms part of a wider vision for a circular district, driven by empowered residents through adaptable structures of highly participatory governance and decision-making. We imagine a digitally-enabled 'People's Parliament', with strong social connections fostered in the physical pursuit of growing, sharing and reusing in a productive hydraulic landscape and shared spaces made from repurposed materials and redundant building components.

Engagement with decision making on all scales, opportunities for training and career-making in critical high-skilled sectors, and the shared experience of quickly manifested results, galvanise the community around common circular principles.

In relation to the 'matter' of the buildings, we see the project as an opportunity to innovate, at scale, an investible model for circular development, in which the material embedded in existing buildings and new components designed in demountable layers (their entire histories recorded on a block-chain), are ascribed genuine financeable value derived from income generated through

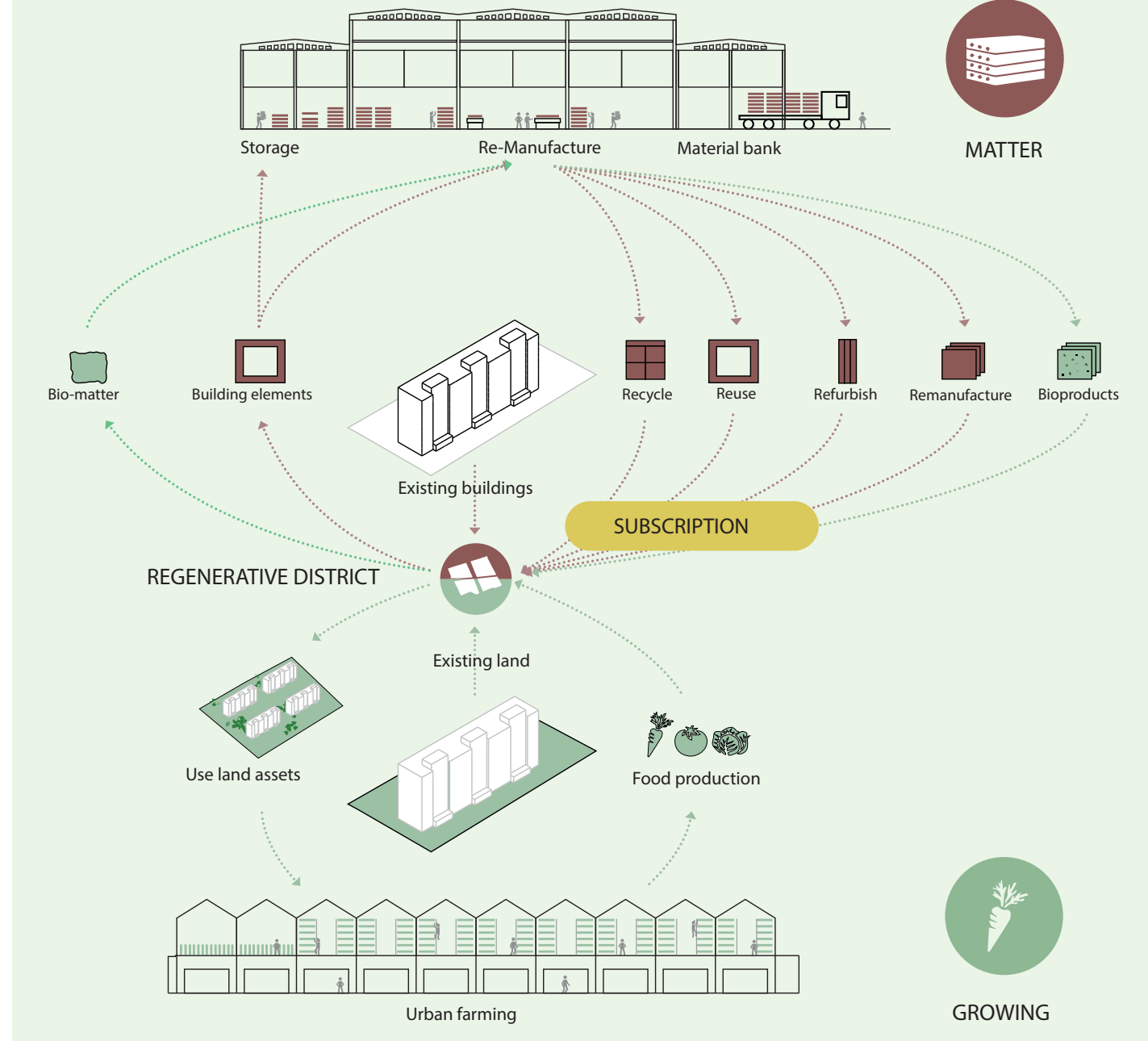
a subscription model in which manufacturers retain ownership and responsibility for performance during and beyond any conventional lifecycle.

At the civic heart of Laagna, we propose a Re-Manufactory, composed of repurposed industrial buildings from elsewhere, where materials removed from existing buildings and biomatter from the landscape are processed and stored. Adjacent, an urban farm and food market grows and distributes food and provides a strong social focus for the district.

At the roadside and adjacent to new transit, a multipurpose facility, assembled from a lightweight frame and redundant building components, begins life as a gathering of small highly visible interventions—a micro-civic belvedere, super-graphic treatment of the bridges, events and community projects in the wasted space of the cutting—but grows to contain administrative functions associated with the circular project—establishing an outward civic identity and interfacing with the passing city to exchange ideas and materials beyond the district.

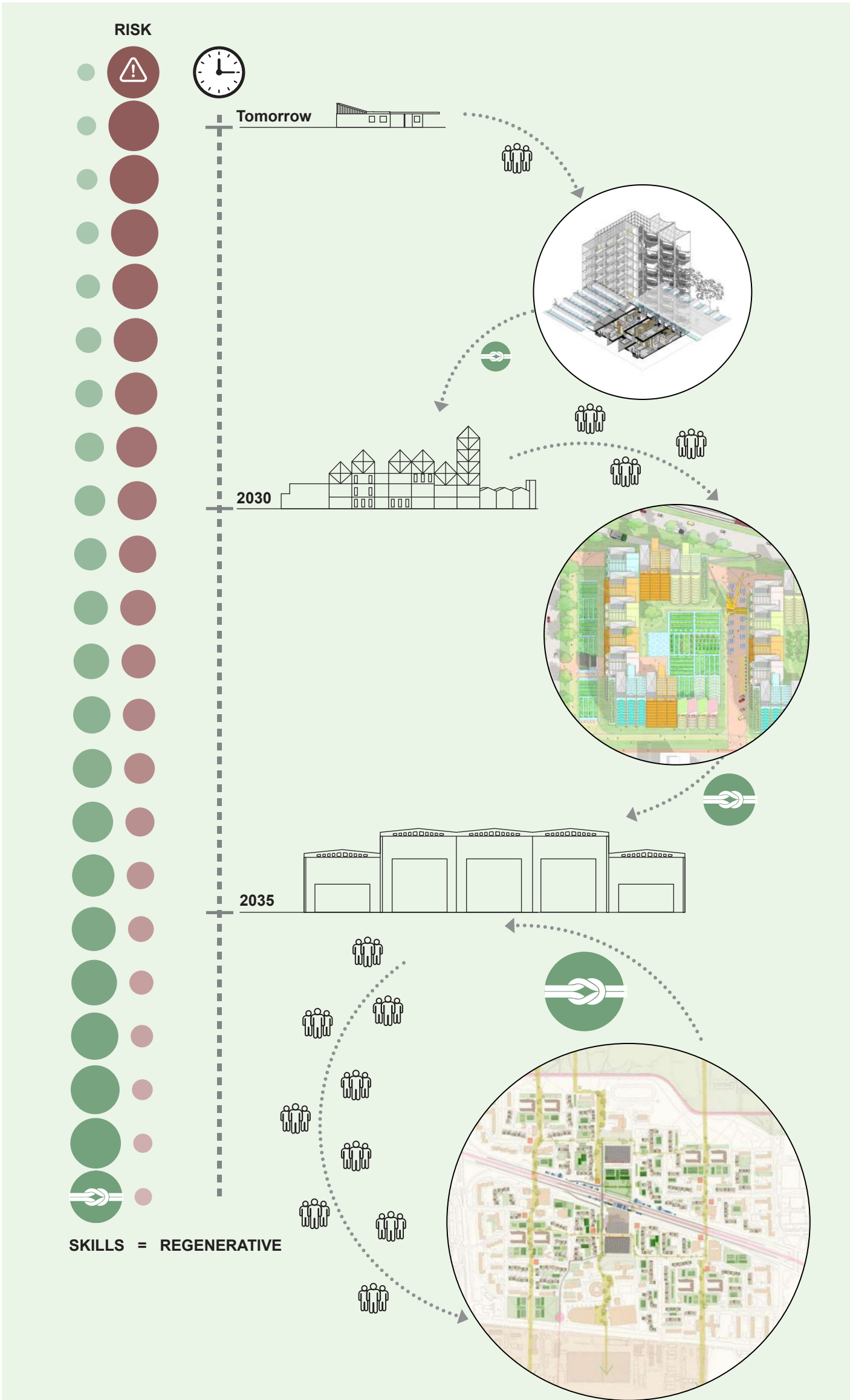


Giving control to residents

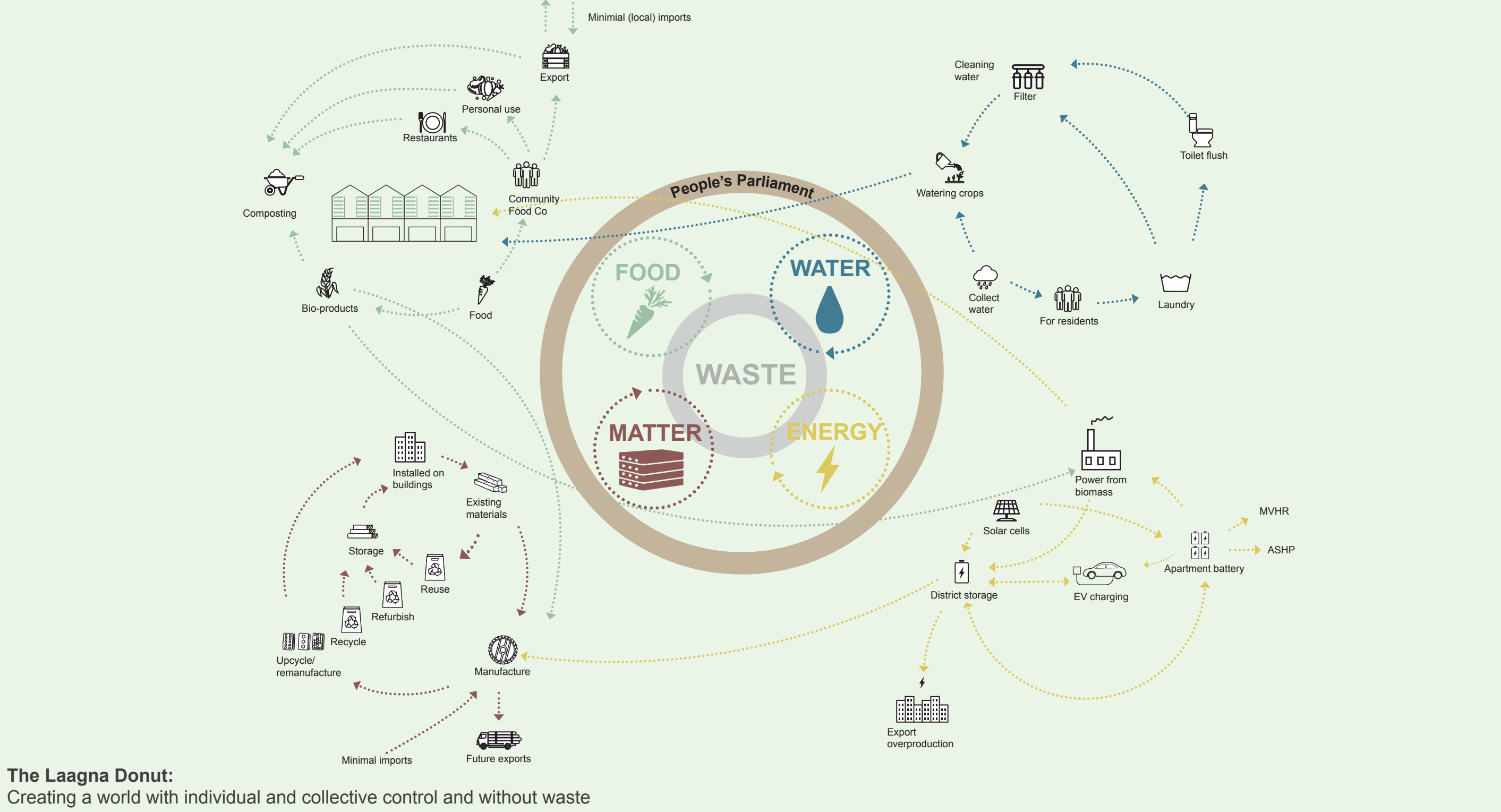


Applying the principles of the Circular Economy to this location

Note that subscription models are important to retain “cradle to cradle” accountability



The Unfinished City: The journey to regenerative



The Laagna Donut:

Creating a world with individual and collective control and without waste

An anticipated sequence of growth

The gradual expansion of activity and development of a district centre composed of civic structures, largely constructed from material gathered from refurbishment works, which evolve in scale as the momentum of regeneration increases, and which support the future of the district.

Ultimately, the district, forever 'unfinished', sustains its own continual renewal and inspires and offers support to a wider movement of kindred projects.

Visibility, resources and facilities grow in step with gathering and training a workforce, growing resident participation, proof of concept and the subsequent de-risking likely to required for external funding.

- 1 - Marker

consciousness, invite intrigue and provide places for meeting, testing and demonstration.

- ## 2 - Prototype

The first building is refurbished to improve performance and flexibility. Materials removed from the building are catalogued and retained for reuse or remanufacture.

- ### 3 - Reuse

Materials removed from disassembled residential facades, fixed to the skin of an adaptable structure extended from the initial marker, form a LivingLab which supports the expansion of re-furbishment works. The LivingLab provides larger spaces for administration and training. Facilities for the storage and processing of materials during the middle phases of the project are also provided, as well as making connections with the passing city.

- #### 4 - Production & Connection

Spaces between buildings are used for urban farming, connecting a food network centred, logistically and socially, on a larger central growing and distribution facility. 'People's Parliament' buildings within the urban blocks connect organising at different scales. New transit provides more inclusive access to Laagna, and interest in the very evident change increases and attracts further engagement.

- ## 5 - Integrated Model

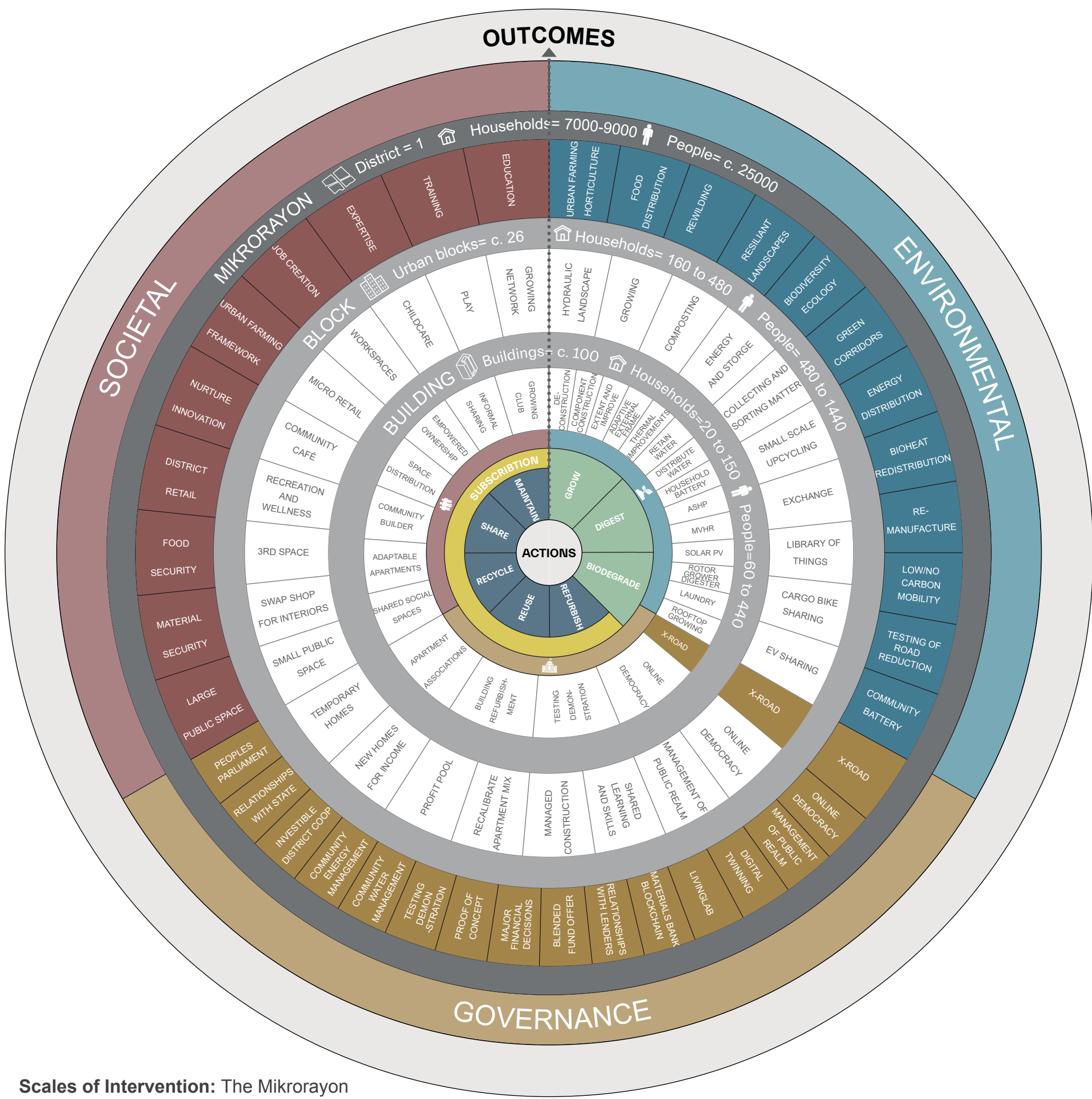
Larger scale 'Re-Manufactory' facilities are housed in a redundant industrial building rescued from elsewhere, completing the civic assembly at the heart of the district.

- ## 6 - Future Framework

The district centre supports refurbishment and improvement works throughout Laagna and remains vital in allowing for future circular renewal. Varied networks extend from the district allowing the flow of people, skills and ideas beyond.



An anticipated sequence of growth



Scales of Intervention: The Mikrorayon



LivingLab: An adaptive interface with the city

Civic function: Circular infrastructure as social centre

